

Weekly Sector & Index Review

Chart Date: August 18, 2025

Prepared by:

Bruce Marshall





Weekly Market Overview Synopsis

Page 2

1 The last two week "Magnificent Seven" Price Action was as follows:

Symbol	AAPL	AMZN	GOOGL	META	MSFT	NFLX	TSLA	Average	Stock Symbol
% Change	14.53%	7.56%	7.84%	4.75%	-0.74%	6.93%	9.25%	9.25%	Magnificent Seven Data for this week.
% Change	-11.81%	-3.54%	-6.14%	-2.53%	0.36%	-4.39%	-8.21%	-5.18%	Magnificent Seven Data for last week.

2 The last 6 Week VIX Price Action was as follows:

14.83	15.15	20.38	14.93	16.41	16.34	Index Price Action Last 5 Weeks
-2.11%	-25.66%	36.50%	-9.02%	-	-0.07%	4 Week VIX Average

3 The last 6 Week \$DXY Price Action was as follows:

98.20	98.27	98.69	97.67	98.46	98.26	\$DXY Price Action Last 5 Weeks
-0.07%	-0.43%	1.04%	-0.80%	-	-0.06%	4 Week \$ DXY Average

4 Weekly Index Price Action included the following:

<u>Winners</u>	\$RUT	IWM	\$INDU	<u>Losers</u>	QQQ	\$NDX.X	\$COMPX	2.96%	Top 3 Winner Index Weekly Average Move
	3.64%	3.57%	1.67%		0.92%	0.94%	1.22%	1.03%	Top 3 Loser Index Weekly Average Move

5 Weekly Sector Price Action included the following:

<u>Winners</u>	XBI	XLV	XHB	<u>Losers</u>	XLU	XLP	XLI	5.15%	Top 3 Winner Sector Weekly Average Move
	6.13%	4.66%	4.66%		-0.65%	-0.57%	-0.21%	-0.48%	Top 3 Loser Sector Weekly Average Move

6 Weekly Semi-Conductor Sector [XSD] Price Action included the following:

<u>Winners</u>	QCOM	AMD	MPWR	<u>Losers</u>	CRDO	SMTX	MRVL	4.13%	Top 3 Winner Weekly XSD Sector Moves
	6.94%	2.74%	2.71%		-3.05%	-2.08%	-1.53%	-2.22%	Top 3 Loser Weekly XSD Sector Moves

7 Weekly Cyber-Security [CIBR] Price Action included the following:

<u>Winners</u>	FTNT	CYBR	PANW	<u>Losers</u>	CSCO	AVGO	OKTA	6.13%	Top 3 Winner Weekly XLF Sector Moves
	6.33%	6.08%	5.99%		-7.79%	0.43%	0.51%	-2.28%	Top 3 Loser Weekly XLF Sector Moves



Weekly Market Overview Synopsis

Page 3

8 Weekly Communications Sector [XLC] Price Action included the following:

<u>Winners</u>	TTWO	CMCSA	CHTR		GOOGL	META	NFLX	5.58%	Top 3 Winner Weekly XLC Sector Moves
	6.75%	5.68%	4.31%	<u>Losers</u>	1.22%	2.09%	2.23%	1.85%	Top 3 Loser Weekly XLC Sector Moves

9 Weekly Energy Sector [XLE] Price Action included the following:

<u>Winners</u>	PSX	EOG	COP		KMI	WMB	OKE	2.58%	Top 3 Winner Weekly XLE Sector Moves
	3.76%	2.44%	1.53%	<u>Losers</u>	-0.82%	-0.79%	-0.74%	-0.78%	Top 3 Loser Weekly XLE Sector Moves

10 Weekly Financials Sector [XLF] Price Action included the following:

<u>Winners</u>	AXP	BRK.B	V		WFC	SPGI	JPM	2.53%	Top 3 Winner Weekly XLF Sector Moves
	2.75%	2.58%	2.26%	<u>Losers</u>	-0.94%	0.10%	0.58%	-0.09%	Top 3 Loser Weekly XLF Sector Moves

11 Weekly Technology Sector [XLK] Price Action included the following:

<u>Winners</u>	ACN	AAPL	CRM		CSCO	NVDA	IBM	1.70%	Top 3 Winner Weekly XLK Sector Moves
	3.26%	0.99%	0.84%	<u>Losers</u>	-7.79%	-1.29%	-0.98%	-3.35%	Top 3 Loser Weekly XLK Sector Moves

12 Weekly Healthcare Sector [XIV] Price Action included the following:

<u>Winners</u>	LLY	TMO	BMJ		LLY	BSX	JNJ	7.92%	Top 3 Winner Weekly XLV Sector Moves
	12.13%	6.16%	5.48%	<u>Losers</u>	-1.89%	0.00%	1.87%	-0.01%	Top 3 Loser Weekly XLV Sector Moves

13 Friday's Close in Individual Stock Price Action included the following:

<u>Winners</u>	UNH	OKTA	CRM		RBLX	CSCO	MRVL	6.91%	Highest Individual Friday Stock Moves
	12.00%	4.23%	4.51%	<u>Losers</u>	-5.85%	-4.60%	-3.40%	-4.62%	Lowest Individual Friday Stock Moves



Weekly Market Overview Synopsis

Page 4

14 Next Week's Anticipated Moves:

(a) Anticipated Weekly Price Action movement in respective uptrend and downtrend motion is as follows:

Symbol	\$COMPX	DIA	\$INDU	IWM	QQQ	\$SOX	SPY	Symbol	VIX
Current Price	21,710.67	449.12	44,911.26	228.21	579.87	5,885.49	644.94	Current Price	14.83
Up Market Price	22,092.28 1.76%	457.92 1.92%	45,319.67 0.90%	233.48 2.26%	588.76 1.51%	5,982.87 1.63%	665.75 3.13%	Up Market Price	18.20 18.52%
Down Market Price	21,040.26 -3.09%	438.76 -2.31%	44,100.00 -1.81%	219.14 -3.97%	566.70 -2.27%	5,496.04 -6.62%	620.14 -3.85%	Down Market Price	14.25 -3.91%
<div> <div>Spinning Top</div> <div>Bull Kicker</div> <div>Bearish Meeting Line</div> <div>Spinning Top</div> <div>Bearish Harami</div> <div>Bear Kicker</div> <div>Bearish Harami</div> </div>							Candlestick Pattern		
<div>-</div> <div>-</div> <div>-</div> <div>-</div> <div>-</div> <div>-</div> <div>-</div>							Friday's Candlestick Market Indication Direction		

15 Interesting Bullish Stocks to look at for next week with respective Price Triggers, Candelstick Patterns, Ratings, & Volume include the following:

	Stock	Current Price	Trigger	Up Trend	Up %	Daily ATR	Sector	Candlestick Pattern	Rating [1-10]	Volume
1	ALNY	449.40	449.05	484.03	7.71%	17.47	CIBR	3 White Soldiers	8.45	713,356
2	JNJ	176.65	177.40	180.64	2.26%	2.66	XLC	3 White Soldiers	8.5	9,477,559
3	NEE	75.43	76.40	78.16	3.62%	1.29	XLV	Bullish Harami	6.95	23,398,404
4	O	58.47	58.95	59.70	2.10%	0.77	XLP	Spinning Top	6.25	6,242,801
5	PEP	150.40	151.27	153.75	2.23%	2.33	XLP	Cup & Handle	6.75	9,162,178
6	VZ	44.24	44.60	44.98	1.67%	0.62	CIBR	Bullish Meeting Line	7.5	2,596,824

16 Interesting Bearish Stocks to look at for next week with respective Price Triggers, Candelstick Patterns, Ratings, & Volume include the following:

	Stock	Current Price	Trigger	Down Trend	Up %	Daily ATR	Sector	Candlestick Pattern	Rating	Volume
1	CSCO	66.20	65.65	61.17	-7.60%	1.57	ARKK	3 Black Soldiers	4.75	40,877,322
2	MPWR	826.03	811.40	760.17	-7.97%	36.86	XLK	Marubozu	4.25	575,639
3	MS	144.64	142.25	137.29	-5.08%	2.78	XHB	Marubozu	4.85	4,985,971
4	RBLX	117.34	111.50	108.55	-7.49%	7.77	XLV	Hammer	3.85	18,735,673
5	VMC	291.69	290.65	282.86	-3.03%	6.19	XBI	Bearish Engulfing	2.55	789,091
6	UNP	220.65	218.45	216.07	-2.08%	4.60	ARKK	Bearish Engulfing	2.05	3,439,259



Friday Sector Review Analysis

Page 5

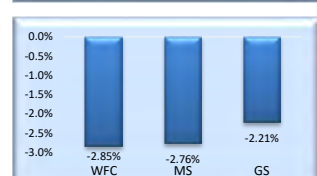
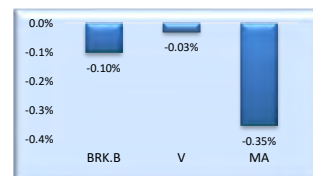
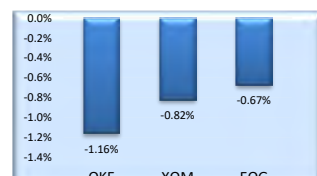
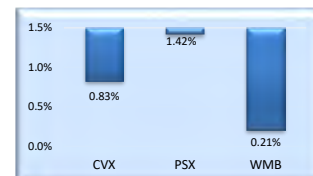
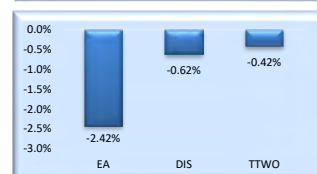
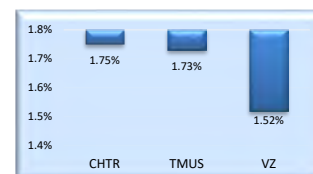
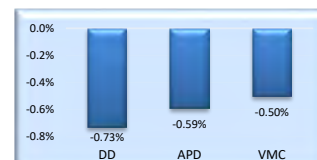
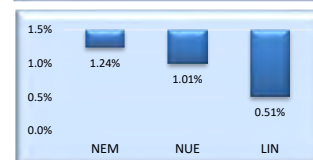
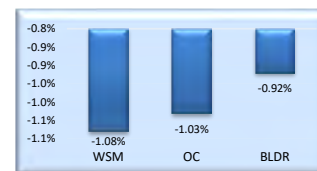
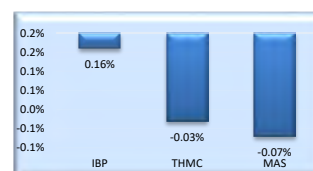
Sector	% Move/Rank	Symbol	% Change	Position/Rank	Symbol	% Change	Bullish Leader Graphics	Bearish Laggard Graphics
[Index Consolidation]	2.05%	Leaders	%	-	Laggards	%		
	1)	\$RUT	-3.64%	1)	QQQ	0.92%		
	2)	IWM	-3.57%	2)	\$NDX.X	0.94%		
	3)	\$INDU	-1.67%	3)	\$COMPX	1.22%		
Sector Consolidation	2.00%	Leaders	%	-	Laggards	%		
	1)	XBI	6.13%	1)	XLU	-0.65%		
	2)	XLV	4.66%	2)	XLP	-0.57%		
	3)	XHB	4.66%	3)	XLI	-0.21%		
[ARKK] - [Kathy Wood]	2.93%	Leaders	%	-	Laggards	%		
	1)	HOOD	2.82%	1)	RBLX	-5.85%		
	2)	ROKU	2.77%	2)	CO IN	-2.18%		
	3)	CRSP	1.94%	3)	PLTR	-2.03%		
[XBI] - [Biotech Sector]	6.13%	Leaders	%	-	Laggards	%		
	1)	ROKU	8.49%	1)	CRSP	-8.88%		
	2)	ROKU	8.48%	2)	XYZ	-5.47%		
	3)	XYZ	3.28%	3)	ACHR	-0.37%		
[CIBR] - [Cyber Security]	1.20%	Leaders	%	-	Laggards	%		
	1)	OKTA	4.23%	1)	CSCO	-4.60%		
	2)	FTNT	2.42%	2)	AVGO	-1.74%		
	3)	CYBR	2.25%	3)	FTNT	0.72%		



Friday Sector Review Analysis

Page 6

Sector	% Move/Rank	Symbol	% Change	Position/Rank	Symbol	% Change	Bullish Leader Graphics	Bearish Laggard Graphics
[XHB] - [Home Builders]	4.66%	Leaders	%	-	Laggards	%		
	1)	IBP	0.16%	1)	WSM	-1.08%		
	2)	THMC	-0.03%	2)	OC	-1.03%		
	3)	MAS	-0.07%	3)	BLDR	-0.92%		
[XLB] - [Materials]	1.91%	Leaders	%	-	Laggards	%		
	1)	NEM	1.24%	1)	DD	-0.73%		
	2)	NUE	1.01%	2)	APD	-0.59%		
	3)	LIN	0.51%	3)	VMC	-0.50%		
[XLC] - [Communications]	3.58%	Leaders	%	-	Laggards	%		
	1)	CHTR	1.75%	1)	EA	-2.42%		
	2)	TMUS	1.73%	2)	DIS	-0.62%		
	3)	VZ	1.52%	3)	TTWO	-0.42%		
[XLE] - [Energy]	0.77%	Leaders	%	-	Laggards	%		
	1)	CVX	0.83%	1)	OKE	-1.16%		
	2)	PSX	1.42%	2)	XOM	-0.82%		
	3)	WMB	0.21%	3)	EOG	-0.67%		
[XLF] - [Financials]	1.20%	Leaders	%	-	Laggards	%		
	1)	BRK.B	-0.10%	1)	WFC	-2.85%		
	2)	V	-0.03%	2)	MS	-2.76%		
	3)	MA	-0.35%	3)	GS	-2.21%		



Sector	% Move/Rank	Symbol	% Change	Position/Rank	Symbol	% Change	Bullish Leader Graphics	Bearish Laggard Graphics
[XLI] - [Industrials]	-0.21%	Leaders	%	-	Laggards	%		
	1)	DE	2.29%	1)	CAT	-2.33%		
	2)	UBER	1.19%	2)	ETN	-1.15%		
	3)	BA	0.78%	3)	HON	-0.66%		
[XLK] - [Technology]	-0.06%	Leaders	%	-	Laggards	%		
	1)	CRM	4.02%	1)	CSCO	-4.60%		
	2)	NOW	1.84%	2)	AVGO	-1.74%		
	3)	IBM	1.29%	3)	NVDA	-1.25%		
[XLP] - [Consumer Staples]	-0.57%	Leaders	%	-	Laggards	%		
	1)	EL	1.64%	1)	TGT	-0.97%		
	2)	PEP	1.50%	2)	COST	-0.44%		
	3)	MDLZ	1.01%	3)	GIS	-0.04%		
[XLRE] - [Real Estate]	0.22%	Leaders	%	-	Laggards	%		
	1)	AMT	1.31%	1)	CBRE	-0.25%		
	2)	O	1.04%	2)	DLR	-0.41%		
	3)	PSA	0.73%	3)	EQIX	-0.62%		
[XLV] - [Healthcare]	4.66%	Leaders	%	-	Laggards	%		
	1)	UNH	12.53%	1)	BSX	-0.79%		
	2)	LLY	2.71%	2)	PFE	0.12%		
	3)	ABT	1.91%	3)	ISRG	0.67%		
[XLY] - [Consumer Discretionary]	2.33%	Leaders	%	-	Laggards	%		
	1)	MO	11.67%	1)	CRWD	-4.02%		
	2)	CAT	8.39%	2)	VZ	-3.05%		
	3)	PANW	5.67%	3)	MRVL	-1.80%		



Wall Street Market Report Summary (8-18-25):

Magnificent Seven Stocks:

(AAPL, AMZN, GOOGL, META, MSFT, NFLX, TSLA):

Two-week performance: [+7.16%] vs. [-3.18%] last week

Index Performance:

Two-week averages: [+2.05%] vs. [+2.73%] last week

Sector Performance:

Two-Week Sector Averages:

- Overall Sectors: [+2.00%] vs. [-1.55%] last week.
- ARKK Funds: [+0.39%] vs. [+7.46%] last week.
- Bio-Tech: [+4.56%] vs. [+2.07%] last week.
- Communications: [+3.58%] vs. [+1.44%] last week.
- Consumer Staples: [-0.57%] vs. [+2.89%] last week.

Wall Street Market Report Summary [8-18-25]

Page 2

Sector Performance:

Two-Week Sector Averages:

- Cybersecurity: [+1.20%] vs. [-0.60%] last week.
- Energy: [+0.77%] vs. [-0.81%] last week.
- Financial: [+1.20%] vs. [+0.84%] last week.
- Technology: [-0.06%] vs. [+3.42%] last week.
- Healthcare: [+3.49%] vs. [+0.08%] last week.
- Semiconductor: [+3.92%] vs. [+3.15%] last week.

Friday's Stock Highlights:

- Winners: UNH [+12.00%], OKTA [+4.23%], CRM [+4.51%].
- Laggards: RBLX [-5.85%], CSCO [-4.60%], MRVL [-3.40%].

Trade Ideas for this Week:

Bull Call Spread on [VZ] @ [(+43 @ -\$1.83) / (-46 @ +\$0.30)]:

Net Debit: \$459.00

Breakeven: > \$44.53 (+0.6%)

Max Profit: \$ 441.00 @ 45% Profit Chance

Daily ATR: 0.62

ATR Move Requisite: 2.26

Pin Pressure: 46

Trigger: \$44.60

Target: \$47.15

Anticipated ROI (if Targets Achieved): 96.08%

[Expiry: 09/19/25]

Wall Street Market Report Summary [8-18-28]

Page 3

Bear Put Spread Idea on [RBLX] @ [(-105 @ +\$2.76 / (+125 -\$11.55))]:

Net Debit: \$879.50

Breakeven: < 215.83 (-0.7%)

Max Profit: \$1,120.50 @ 48% Profit Chance

Daily ATR: 7.77

ATR Move Requisite: 1.61

Pin Pressure: \$100

Trigger: \$111.50

Target: \$104.72

Anticipated ROI (if Targets Achieved): 104.72%

[Expiry: 09/19/25]

Trading Insights:

Individual stock movements and sector insights provide insights into market dynamics. Daily variance graphs highlight volatility trends.

Information assembled by IV-TRS Trading is for informational purposes only. Thoughts and ideas conveyed by Bruce Marshall should not be utilized for initiating your actual trades in the market. Investments in any stock option or individual stock positions should be pursued by Investors with extreme caution at the sole and exclusive risk of the individual investor.



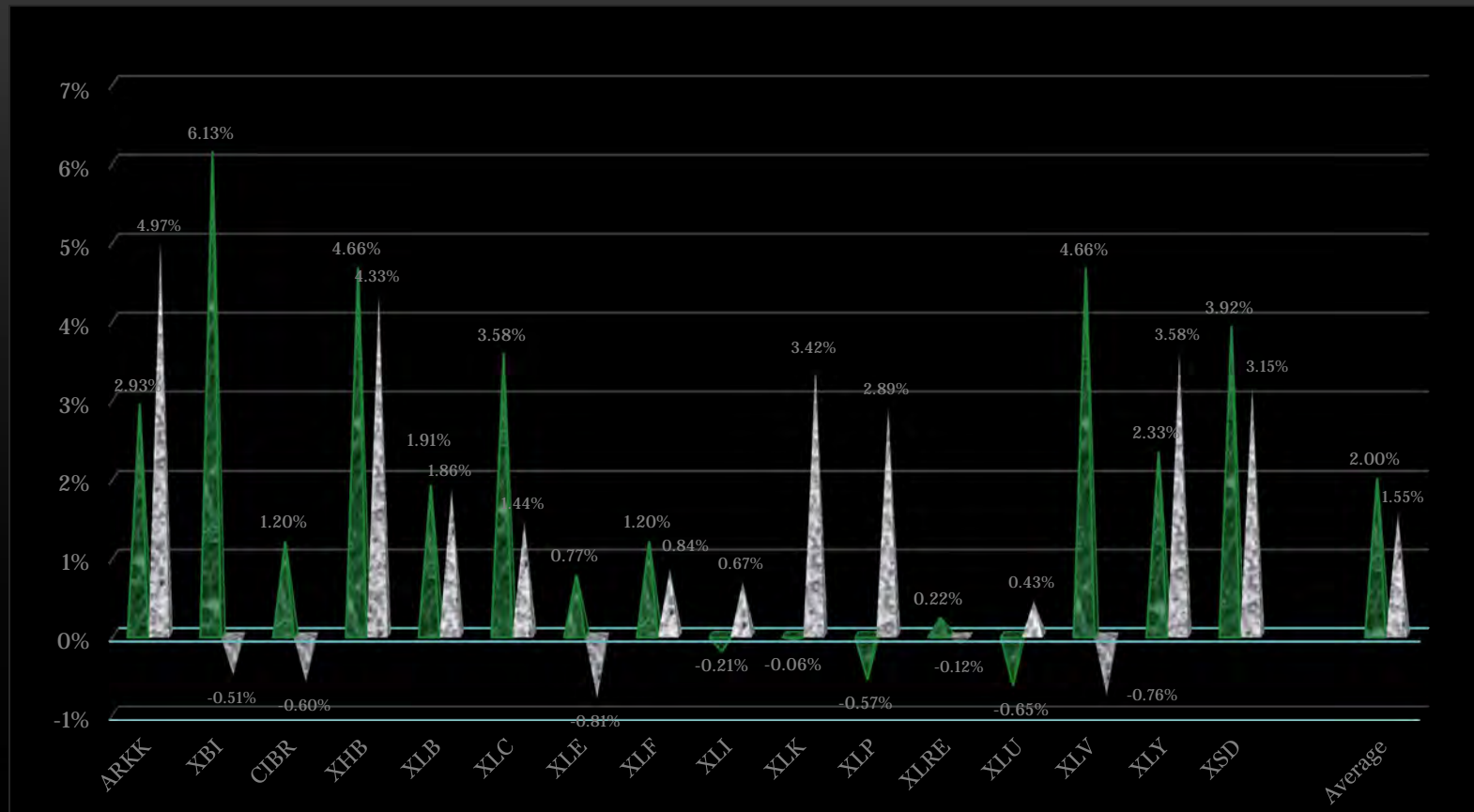


“Chart Walk ”

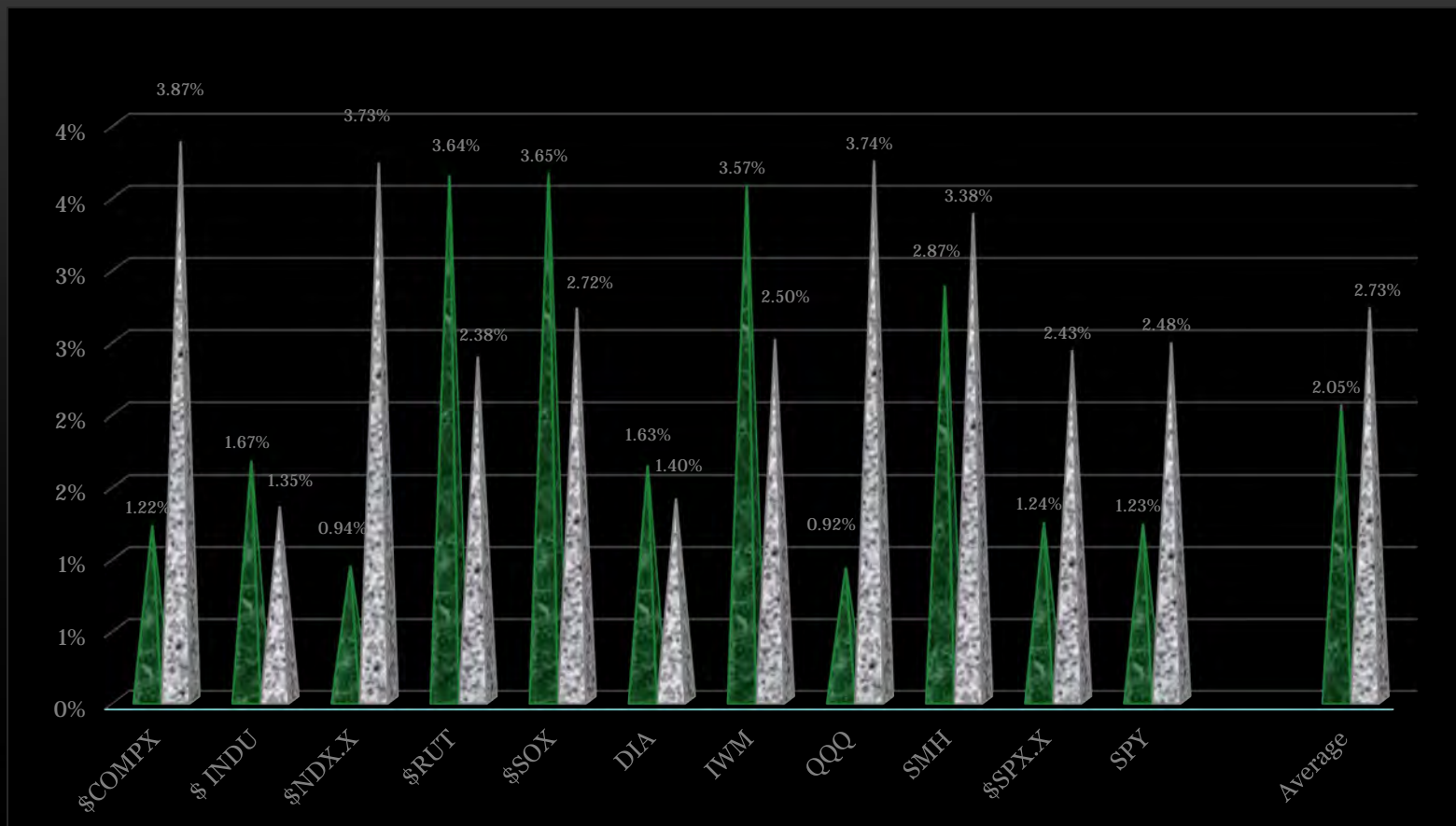
Our Wall Street Market Report [08-18-25]



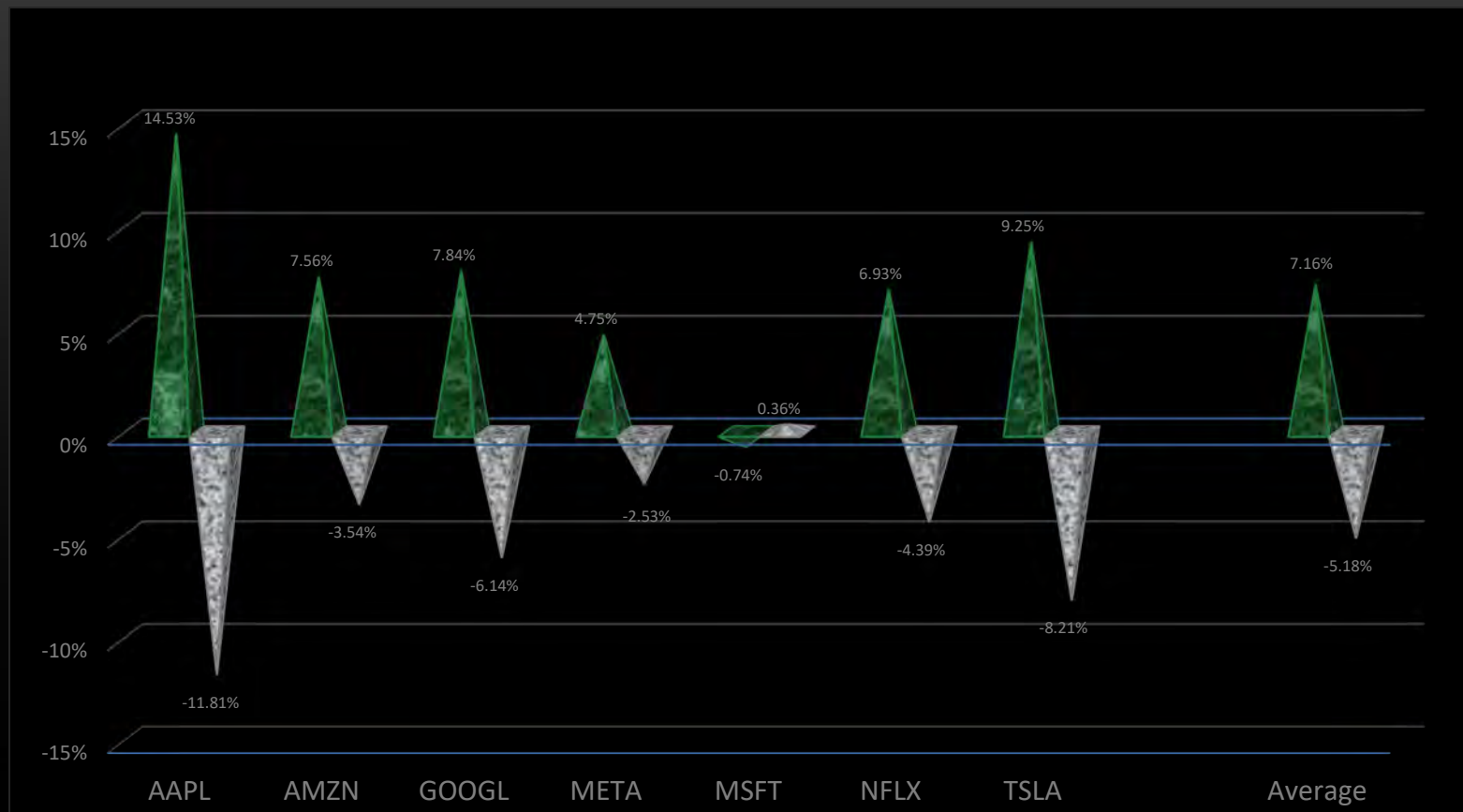
Two Week Sector Performance Graph Averages: [+2.00%] vs. [-1.55%] Last Week



Two Week Index Performance Graph Averages: [+2.05%] vs. [+2.73%] Last Week



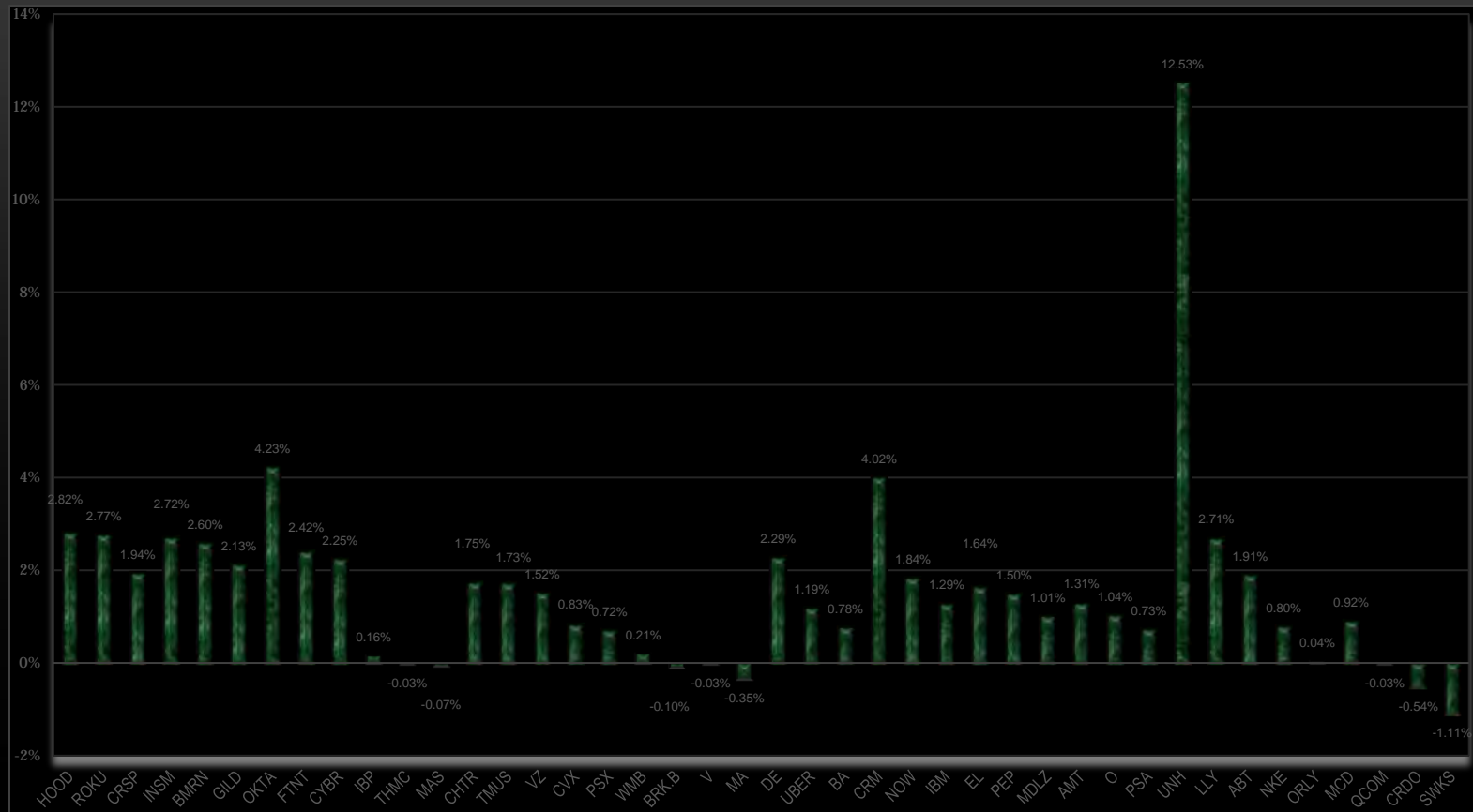
Two Week “Magnificent Seven” Performance Graph: +7.16%] vs. [-3.18%] Last Week



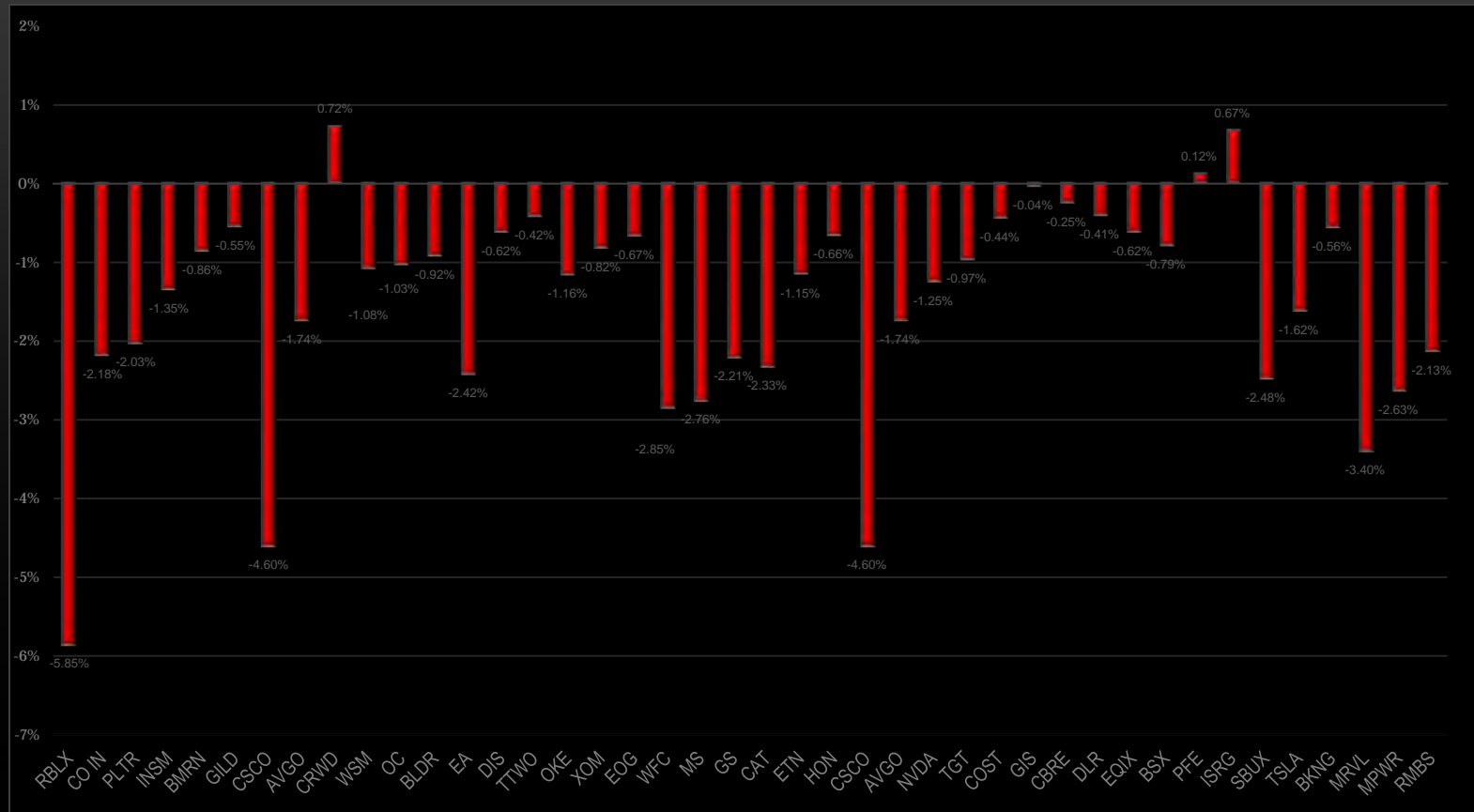
VIX Four Week (Fear Index) History [-2.11%] this week ... Prior Weeks [-25.66%] [+36.50%] [-9.02%]



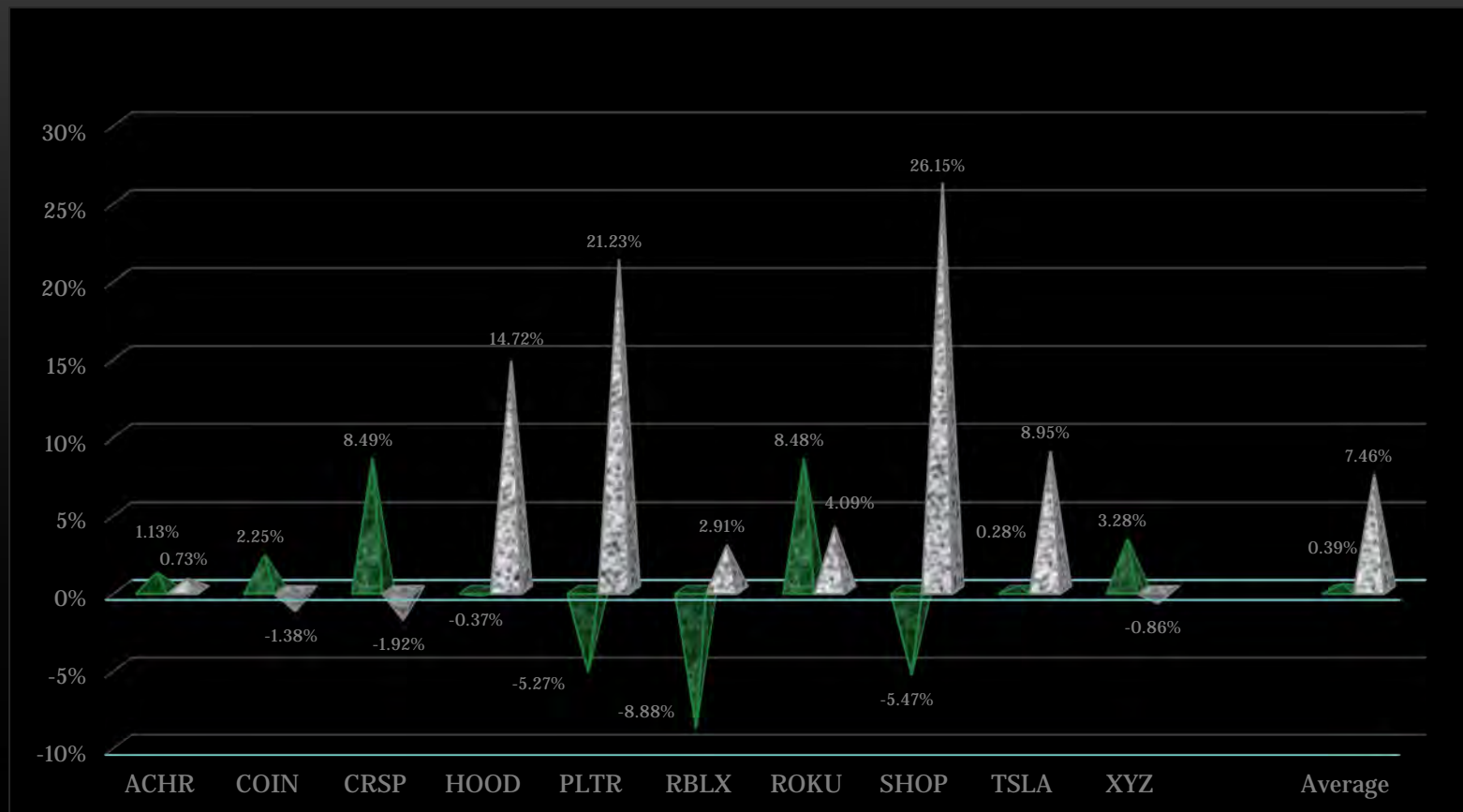
Friday 's Stock Winners Within The Individual Sectors: [UNH] @ [+12.00%] & [OKTA] @ [+4.23%]



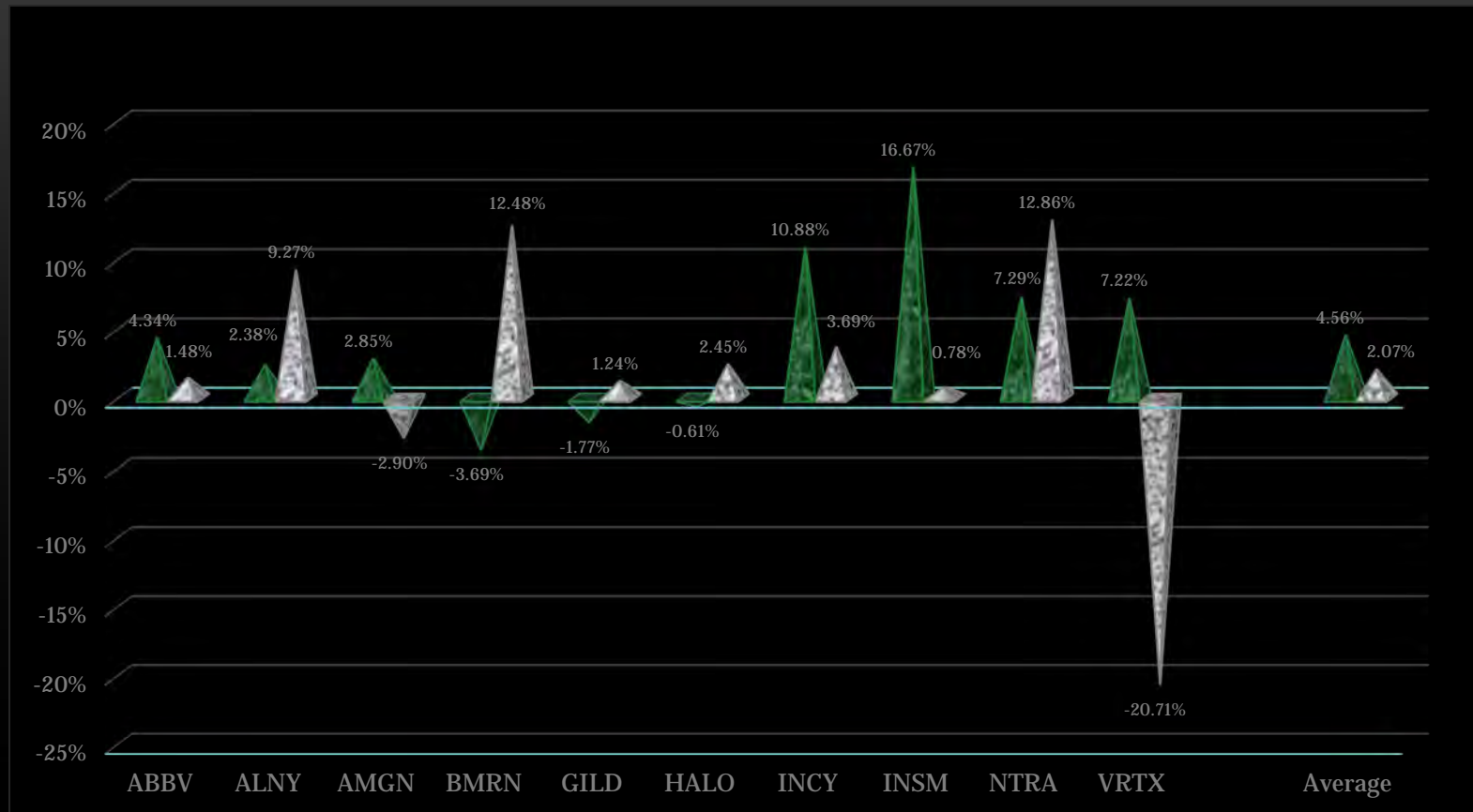
Friday's Stock Laggards Within the Individual Sectors: [RBLX] @ [-5.85%] [CSCO] @ [-4.60%]



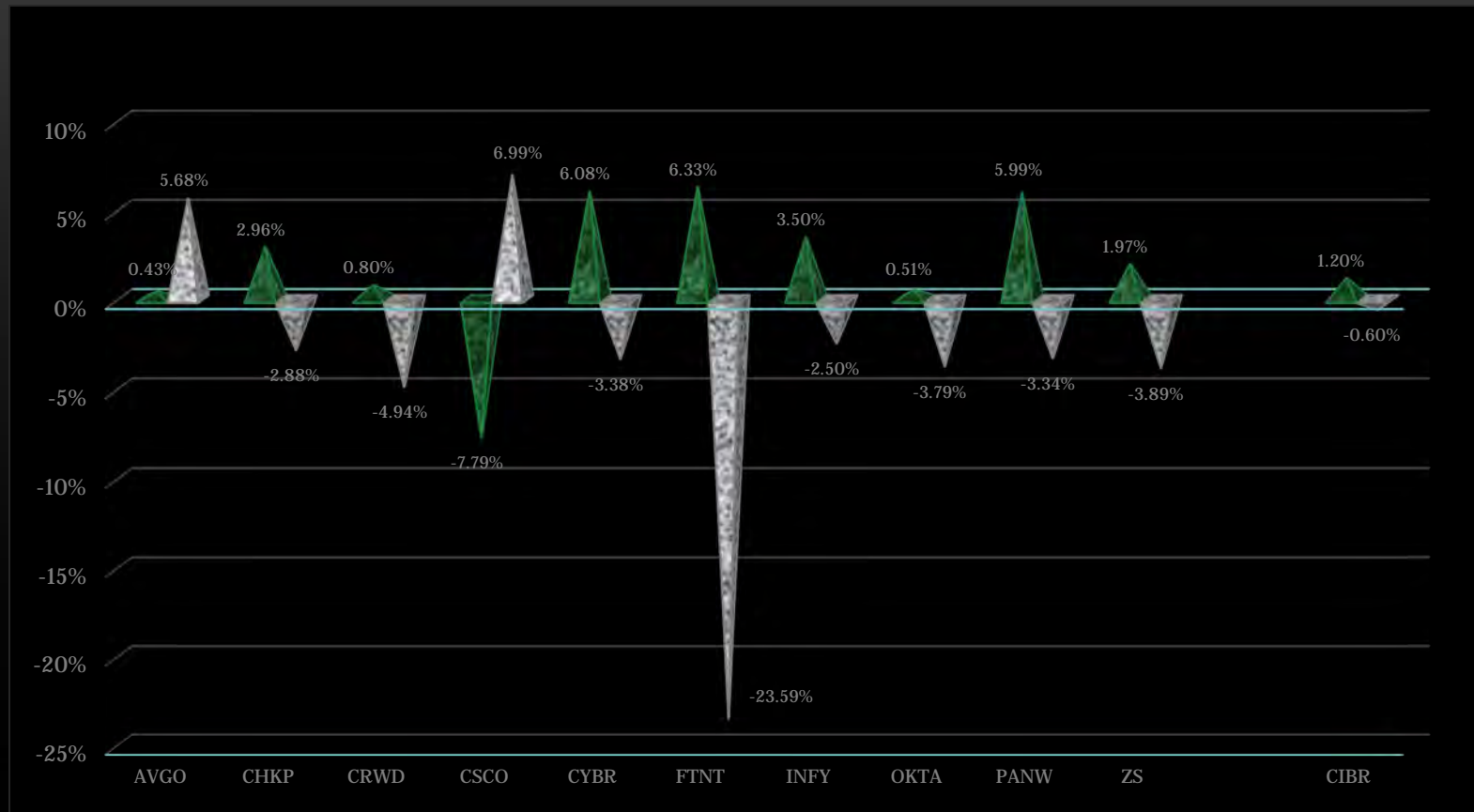
Two Week ARKK Funds : [+0.39%] vs. [+7.46%] Last Week



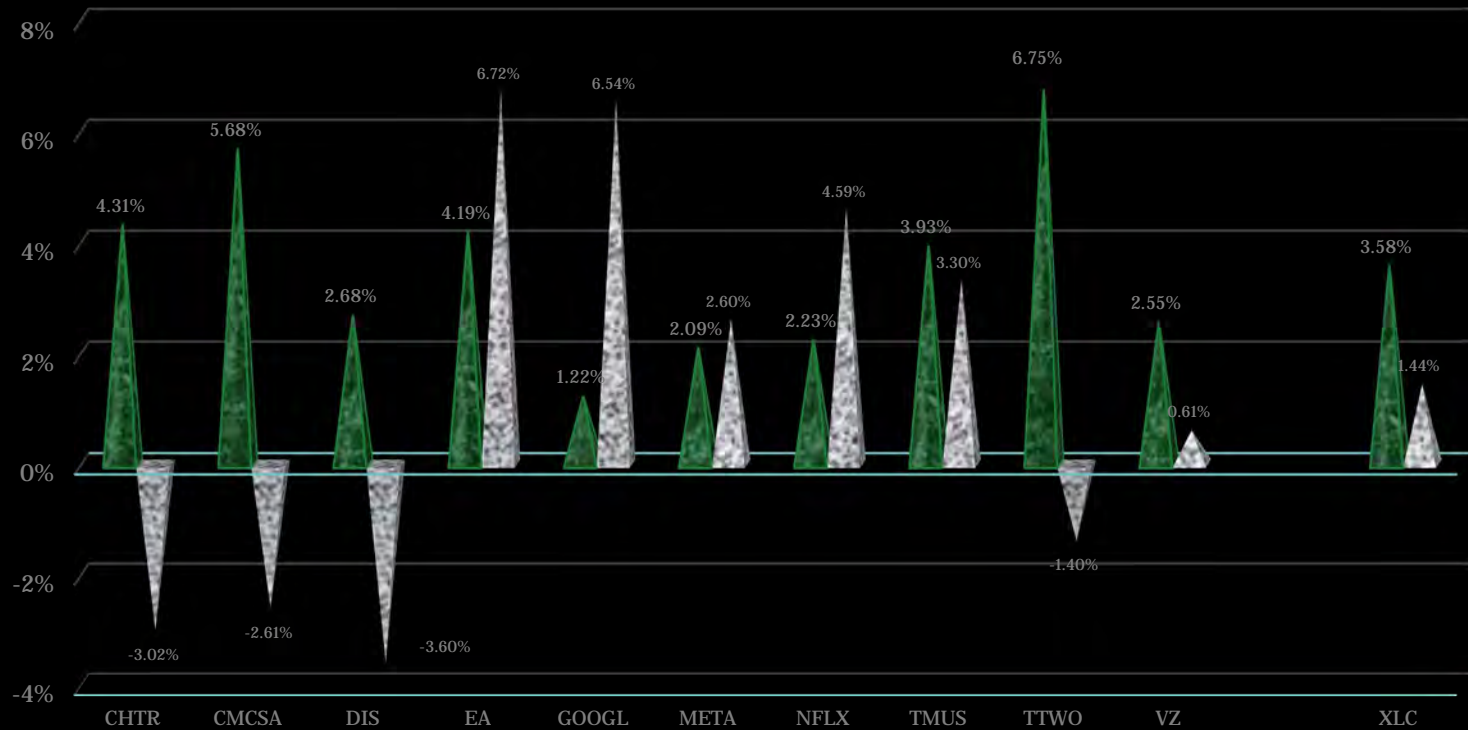
Two Week Bio-Tech Sector Averages: [+4.56%] vs. [+2.07%] Last Week



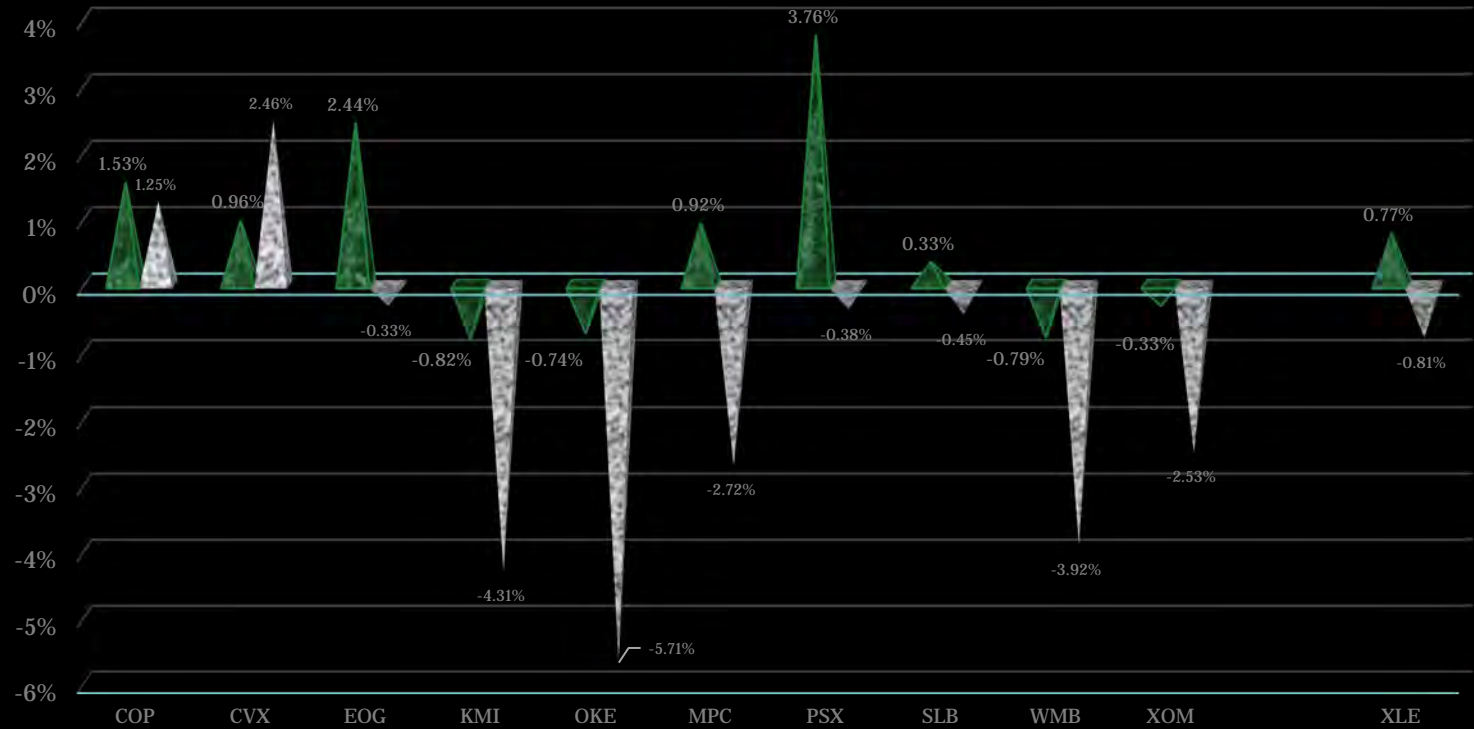
Two Week Cyber-Security Sector Averages: [+1.20%] vs. [-0.60%] Last Week



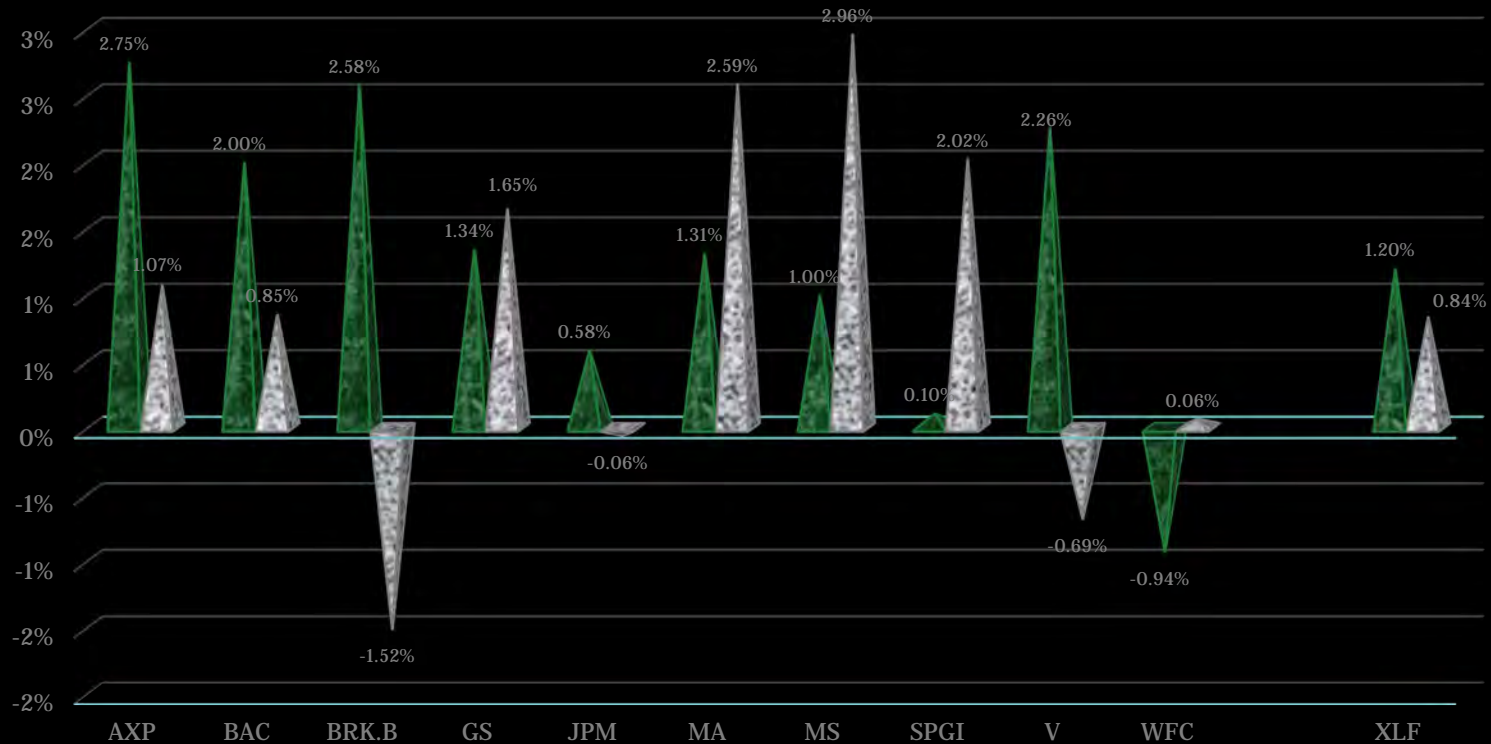
Two Week Communications Sector Averages: [+3.58%] vs. [+1.44%] Last Week



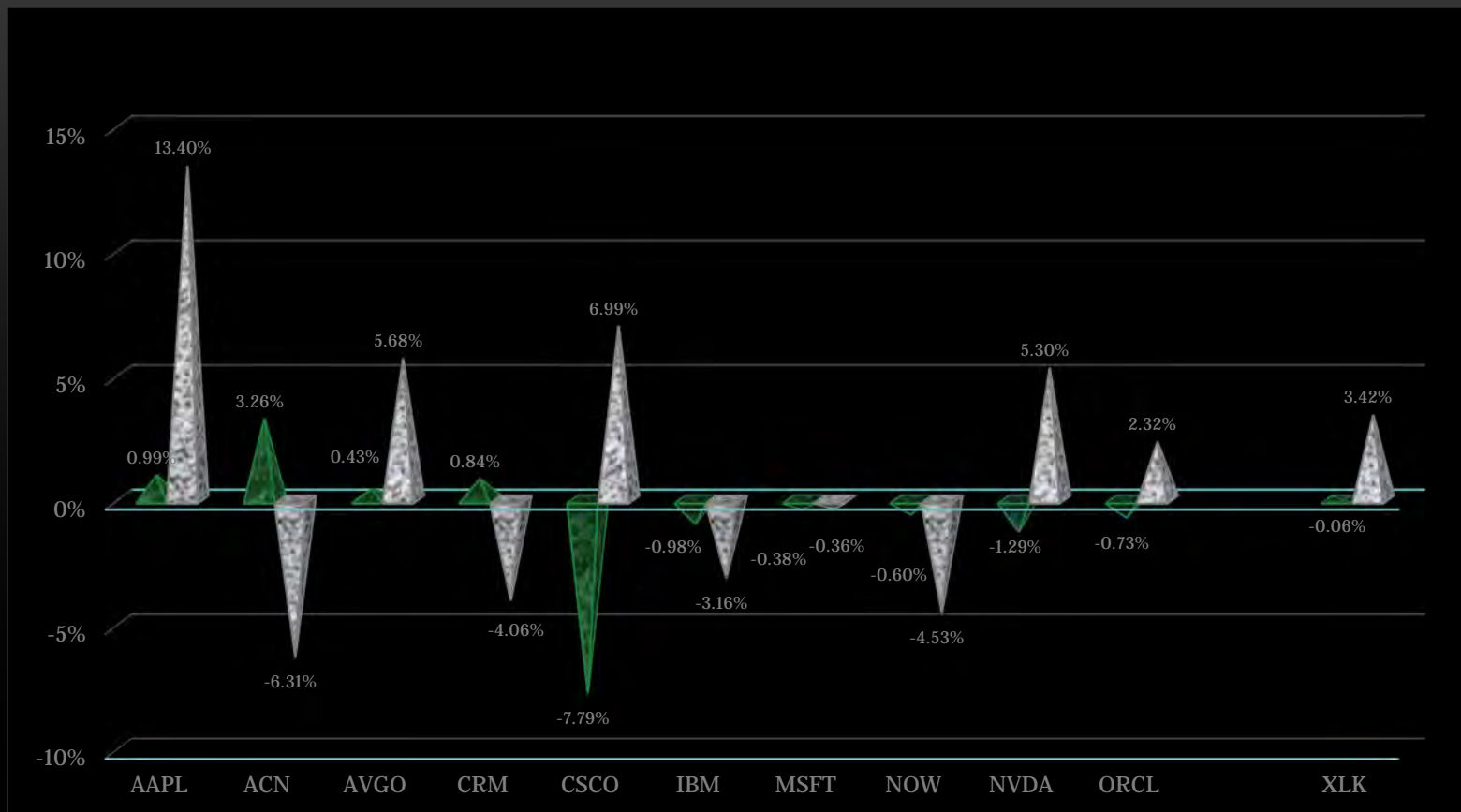
Two Week Energy Sector Averages: [+0.77%] vs. [-0.81%] Last Week



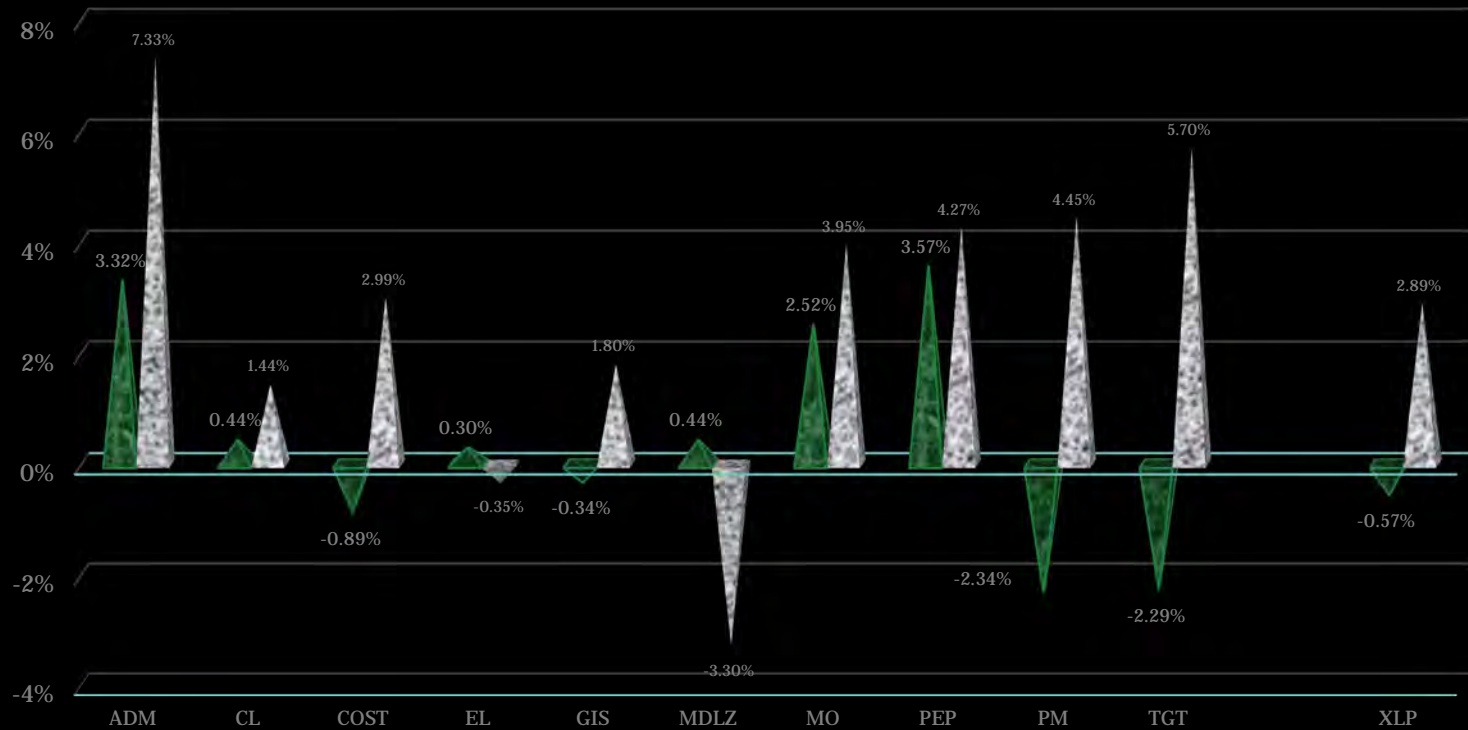
Two Week Financial Sector Averages: [+1.20%] vs. [+0.84%] Last Week



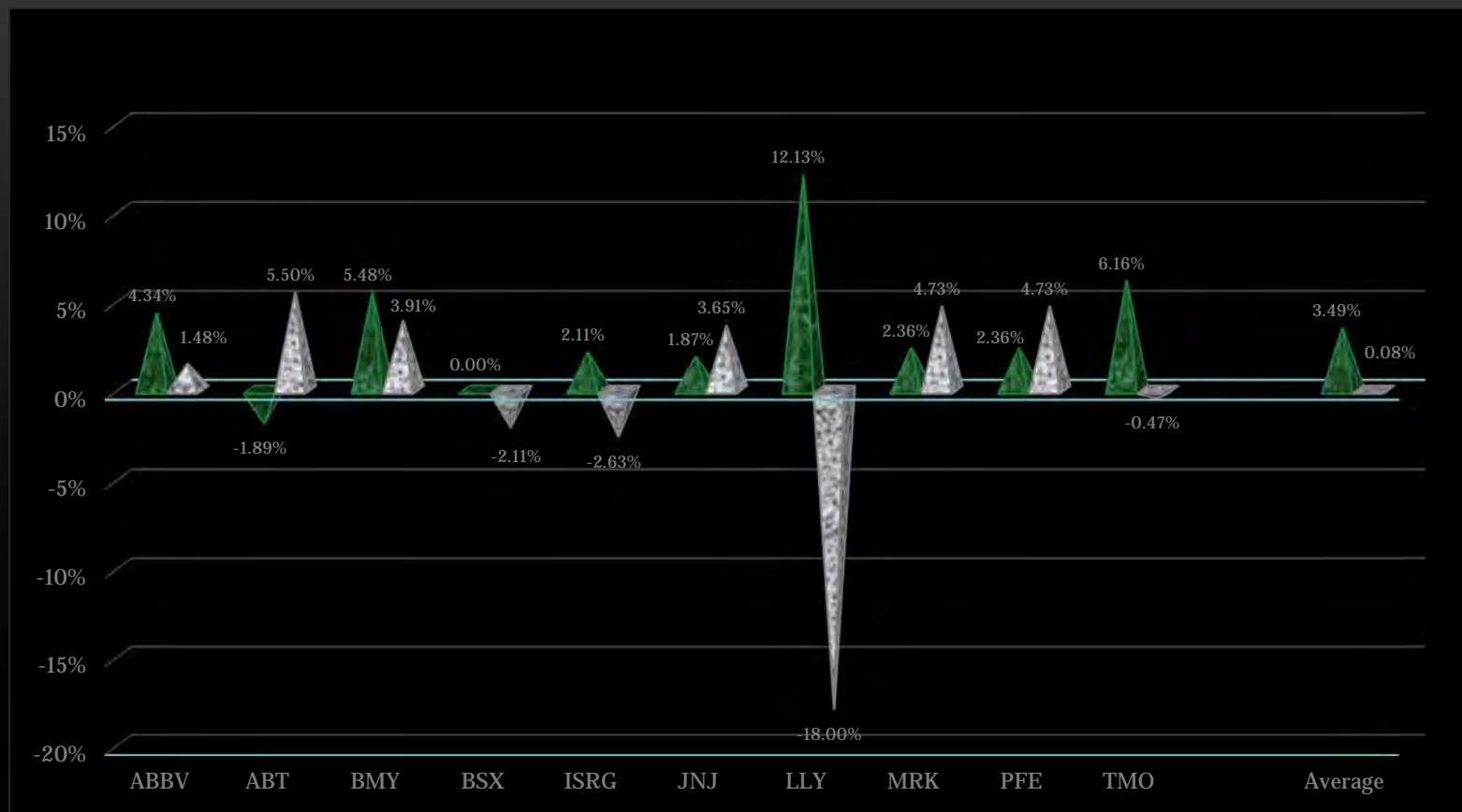
Two Week Technology Sector Averages: [-0.06%] vs. [+3.42%] Last Week



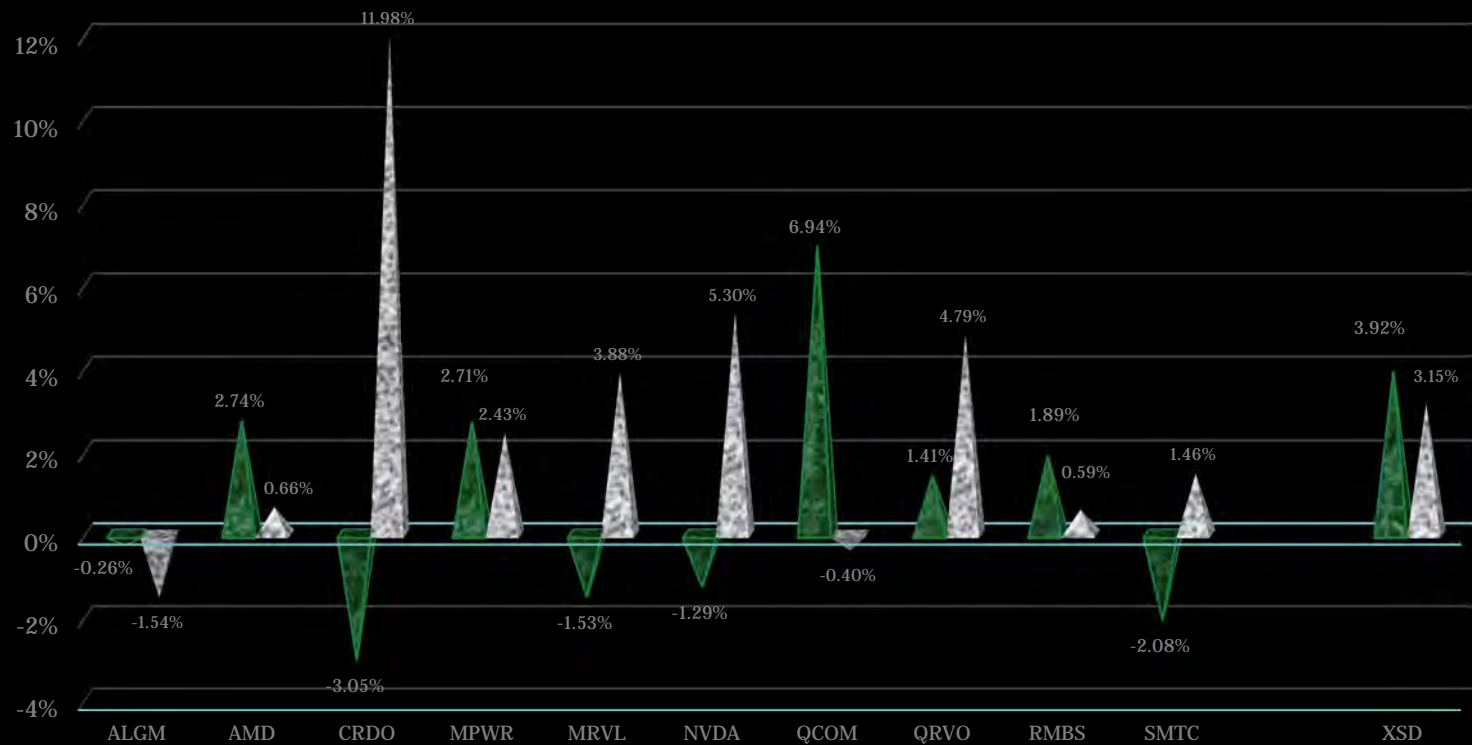
Two Week Consumer Staples Sector Averages: [-0.57%] vs. [+2.89%] Last Week



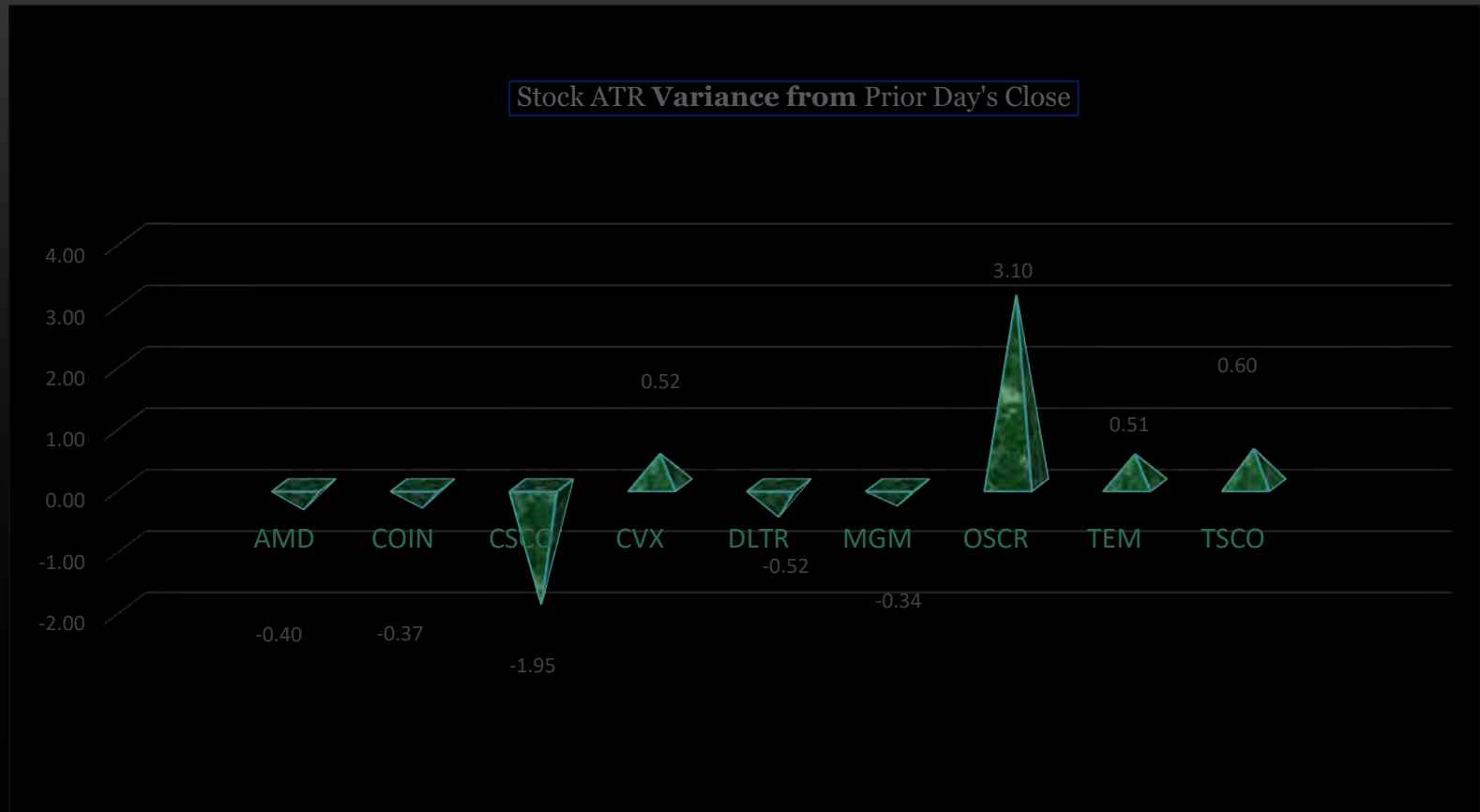
Two Week Healthcare Sector Averages: [+3.49%] vs. [+0.08%] Last Week



Two Week Semiconductor Averages: [+3.92%] vs. [+3.15%] Last Week



Friday's Rebel Pit Average True Range ("ATR") Daily Variance Graph



Friday's "My Daily Stalkers" Average True Range ("ATR") Daily Variance Graph



\$INDU: Up Market @ [+0.90%] to [45,320] ... Down Market @ [-1.81%] to [44,100]

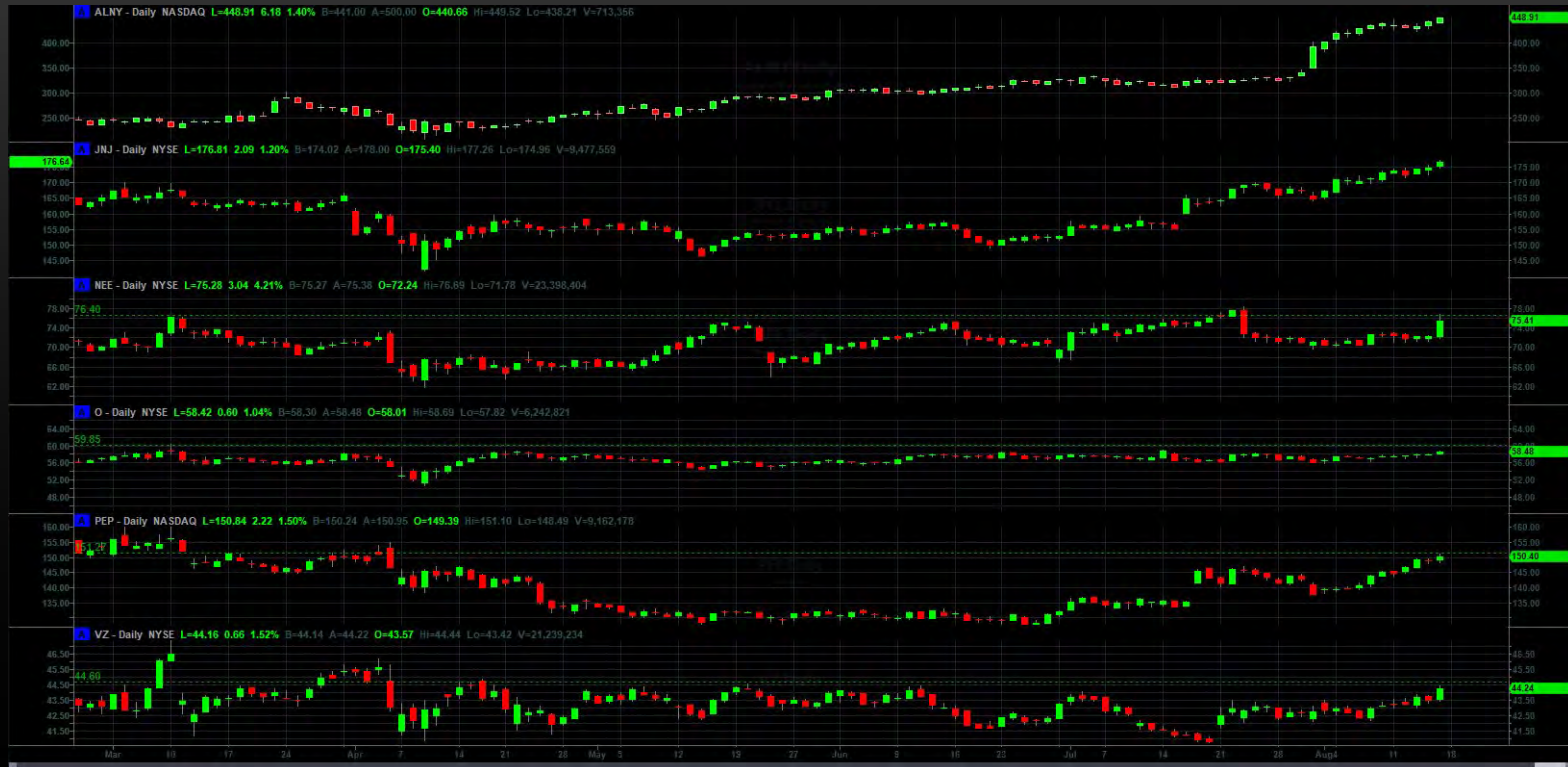




SPY: Up Market @ [+3.13%] to [665.75] ... Down Market @ [-3.85%] to [620.14]



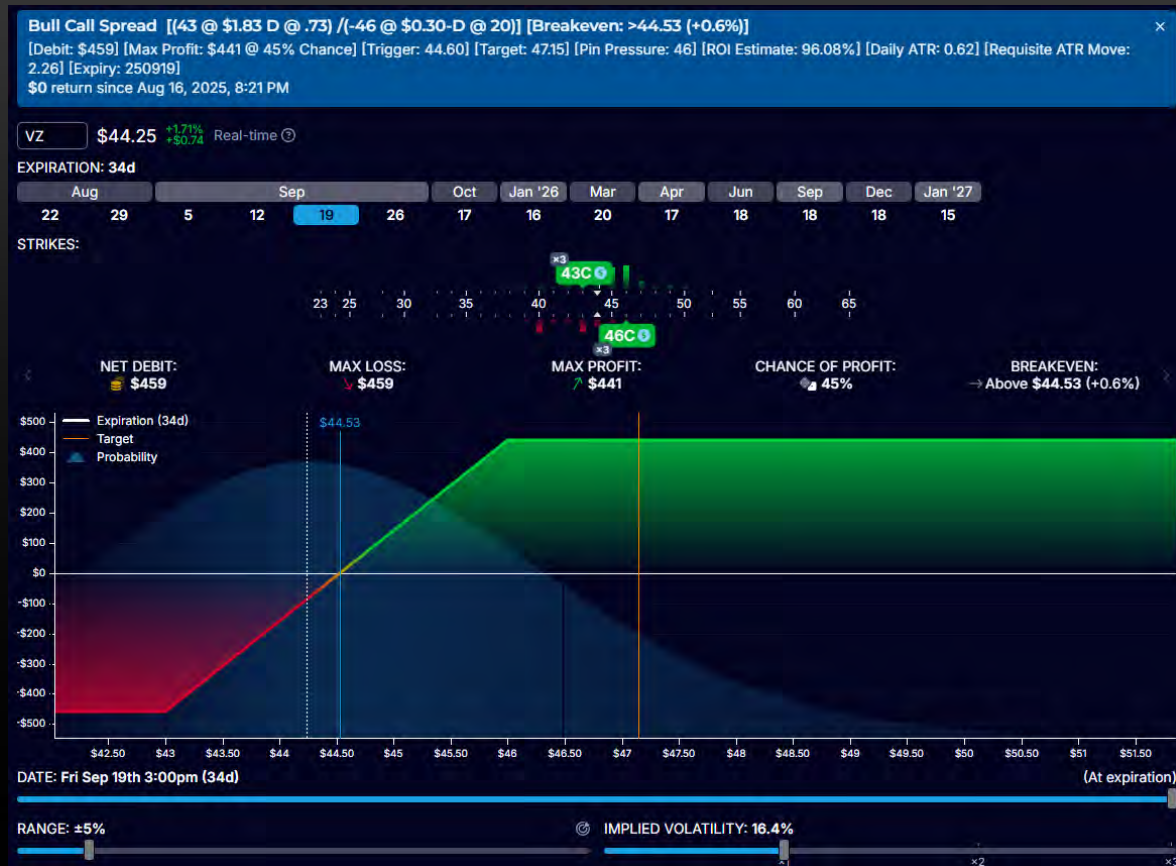
This Week's Bullish Trade Ideas: [ALNY] [JNJ] [NEE] [O] [PEP] [VZ]



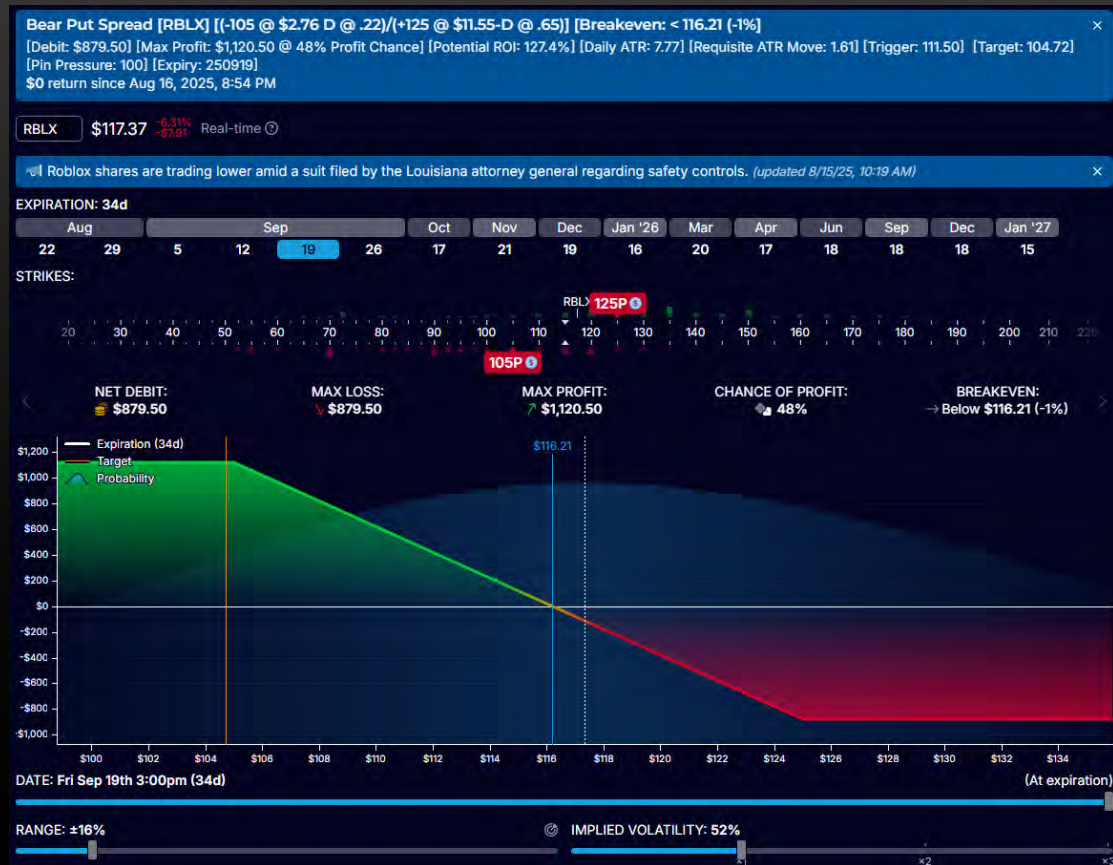
This Week's Bearish Trade Ideas: [CSCO] [MPWR] [MS] [RBLX] [VMC] [UNP]



Bull Call Spread Idea: [VZ] - [(+43 / -46)] [Trigger @ \$44.60] [Target @ \$47.15] [Profit Potential 96.08%]



Bear Put Spread Idea: [RBLX] - [(-105 / +125)] [Trigger: \$111.50] [Target: \$104.72] [Profit Potential: 127.4%]





“Chart Walk ”

Our Wall Street Market Report [08-18-25]

